

Proportional pressure regulator VPPM

With added dimensions: Fast, universal, precise

FESTO



A new dimension ...

... in proportional pressure regulators, namely the VPPM. The right parameters for every application – simply select the desired regulator characteristics from 3 presets at the press of a button. No need for specialists: Reliable regulation – thanks to the two-stage regulation action with Multi-Sensor Control.

Total individuality

Our modular system for the VPPM adapts to meet your needs precisely, for maximum flexibility with regard to electronic, pneumatic and mechanical components.

Flexibility

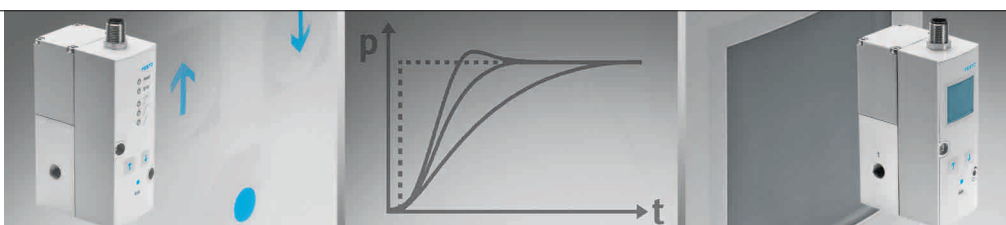
In-line or flange versions, current- or voltage actuated, connection to field bus/Ethernet via a CPX terminal. Meets all needs, ranging from basic performance to a high-tech product. An absolute first!

Multi sensor control

Integrated sensors for best regulation quality and robust regulator behaviour. The key feature: Temperature compensation – no pressure drift due to temperature changes!

Diagnostics

The VPPM provides an electrical signal corresponding to the pressure reached. It is also able to diagnose when a setpoint has not been reached. A CPX terminal allows all values to be controlled and monitored remotely.



Reliable regulation - on the button ... robust: with 3 presets

... variable: via the display!

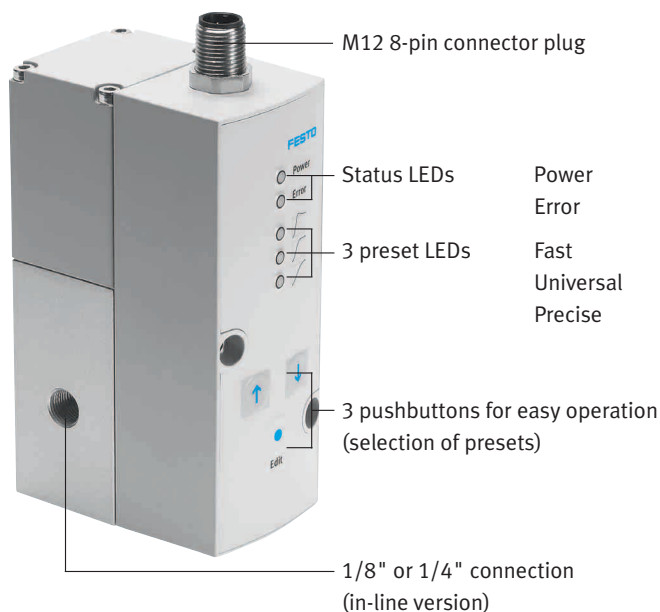
241.1.PSI →

Product Short Information

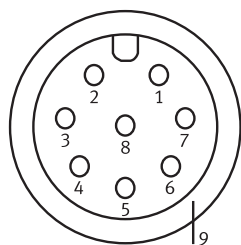
Proportional pressure regulator VPPM

With added dimensions: Fast, universal, precise

Operator interface



Pin allocation for M12 8-pin plug

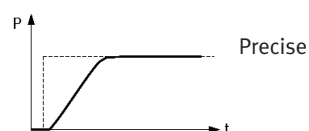
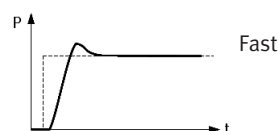


- 1 Digital input 1
- 2 24 VDC
- 3 Setpoint - (-w)
- 4 Setpoint + (+w)
- 5 Digital input 2
- 6 Actual-value output (x)
- 7 0 VDC (GND)
- 8 Digital output (24 VDC)
- 9 Metal housing

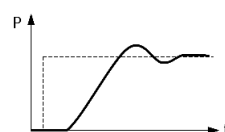
Main application

Can be used universally, for high precision or high speed at the press of a button. Or for processes requiring precise flexible local regulation of force and pressure. Robust regulator characteristics ensure optimum results.

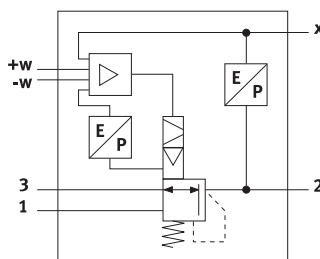
Only with Festo: Robust regulation



Competitors' products:
Generally with overshoots



Operating principle: Cascade control



Technical data

Valve function	3/2-way proportional pressure regulator				
Flow rate in l/min.		ND 6	ND 8	ND 8 flange	ND 12
	2 bar	380	650	450	2000
	6 bar	900	1750	1050	4500
	10 bar	1400	2750	1650	7000
Pressure range	0,02 ... 2 bar / 0,06 ... 6 bar / 0,1 ... 10 bar				
Switching output	PNP or NPN				
Pneumatic connection	G1/8", 1/8 NPT, G1/4", 1/4 NPT, G1/2", 1/2 NPT, Flange				
Mounting	In-line (1/8", 1/4" or 1/2") or flange (only ND 6 and ND 8)				
Electrical interface	M12 plug, 8-pin, all connections prot. against short circuit / reverse polarity				
Diagnostic function	Actual value				
	Setpoint reached				
	Upper/lower limit value reached				
3 Presets	Fast, universal, precise				
Displays/controls	VPPM-LED: Regulator presets selectable by pushbuttons				
	VPPM-LCD: Numerous editing functions				
Connecting cable	Pre-assembled cables 2, 5 or 10 m with open cable ends				
	Y connecting cable for direct connection to analogue inputs/outputs (CPX) with IP65/67				

Festo AG & Co. KG

Ruiter Strasse 82
73734 Esslingen
www.festo.com
Tel. +49 711 347 0
Fax +49 711 347 21 44
service_international@festo.com